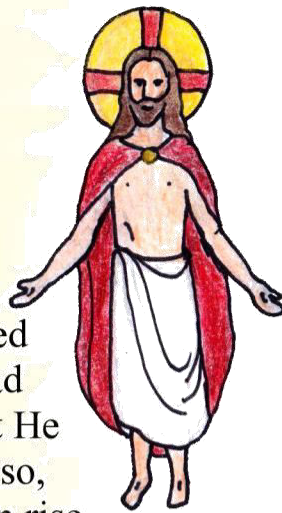


Alleluia!

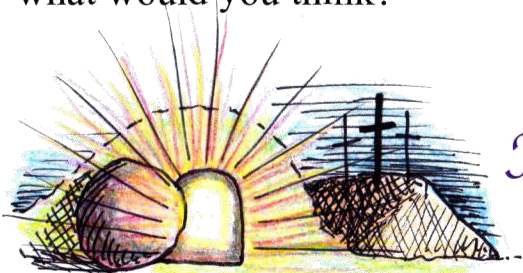
Today is the biggest feast of the year! Jesus rose from the dead on the first Easter Sunday. By rising from the dead, He showed that He was God and that everything He had said was true. It showed His followers that He wasn't gone forever- it gave them hope. Also, because He rose from the dead, now we can rise from the dead too after we die.



Imagine what it would be like to be one of Jesus' friends when He died on the cross. You were hoping that He would be the saviour that would overthrow the bad government and become the king, but now He was beaten and killed! How would you feel? What would you be doing after this horrible weekend was over? It would seem pretty hopeless, wouldn't it?

But then- some of the women come running and say that Jesus rose from the dead! Would you believe them? And then imagine that you are in the room with the other disciples with the doors locked and suddenly Jesus is standing in the room, saying, "Peace be with you!" Now what would you think?

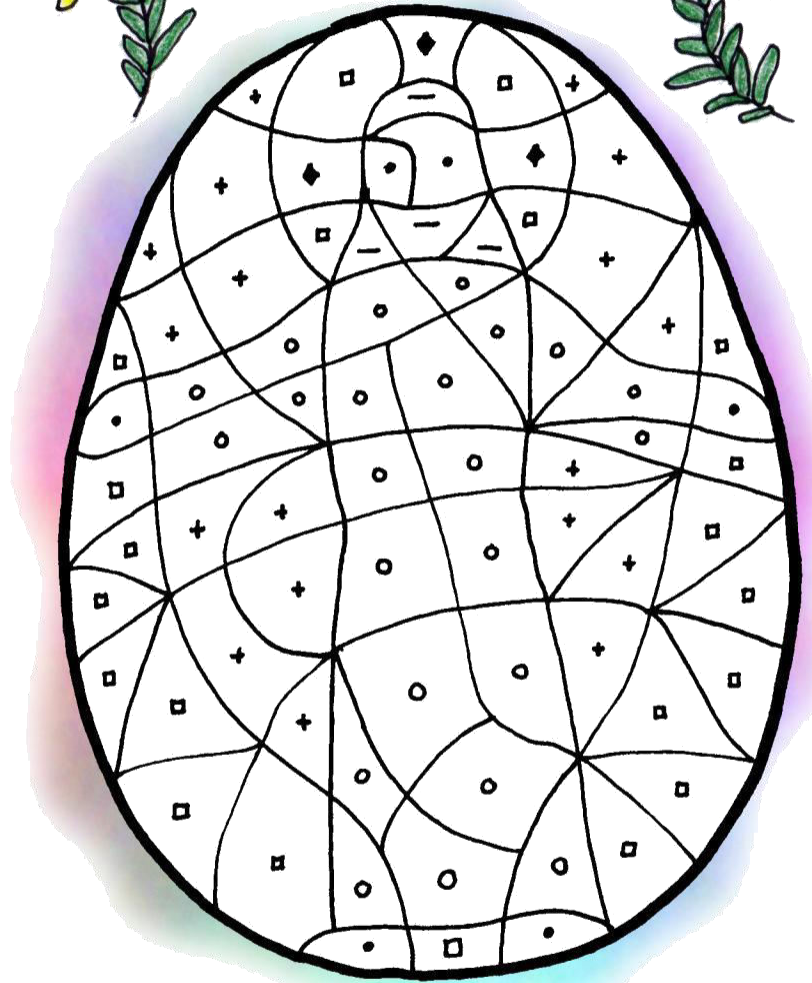
*Today is the day
for rejoicing!*
JESUS IS ALIVE!



Answers to Easter True or False:
1. false 2. false 3. false 4. true 5. true
6. true 7. false

The Kids' Bulletin

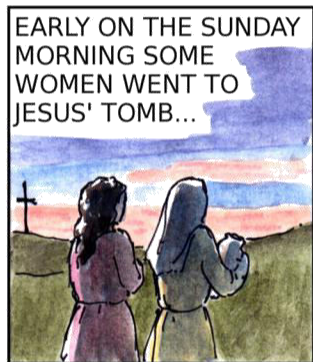
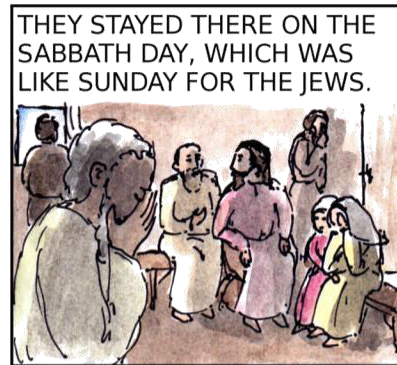
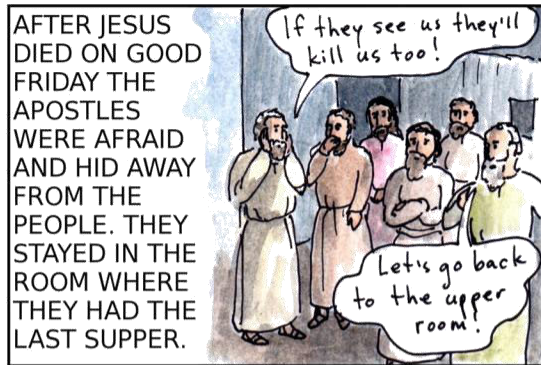
Easter Sunday
April 12th, 2020



The two men on the road to Emmaus didn't know the man who came and walked with them on Easter morning. Use the colour code below to see if you can figure out who it was!

- ◆ Red
- + Purple
- Skin-colour
- Yellow
- Brown
- White

Easter Sunday



WHEN JESUS DIED ON THE CROSS HIS FOLLOWERS THOUGHT THE END HAD COME. BUT JESUS HAD DIED ON PURPOSE TO SAVE US FROM HELL! THEN HE ROSE FROM THE DEAD SO THAT WE COULD RISE FROM THE DEAD TOO. REJOICE WITH OUR LADY AND THE APOSTLES THAT JESUS ROSE FROM THE DEAD!

Easter: True or False?

*How well do you know the Easter Story?
See if you can figure out which of these are true and which are false.*

1. After Jesus died on the Cross He was buried in a tomb for four days. True or false?
2. The first time the women went to the tomb on Easter morning, they saw Jesus' dead body in it. True or false?
3. Nobody went to Jesus' tomb until the afternoon on Easter Sunday. True or false?
4. At first when she saw Him, Mary Magdalen didn't recognize Jesus. True or false?
5. When Jesus rose from the dead, He could never die again. True or false?
6. With His resurrected body, Jesus could go through locked doors. True or false?
7. The disciples were not surprised when Jesus came back after He died, since they knew all along that was going to happen. True or false?

