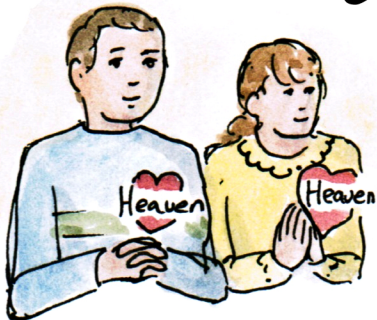
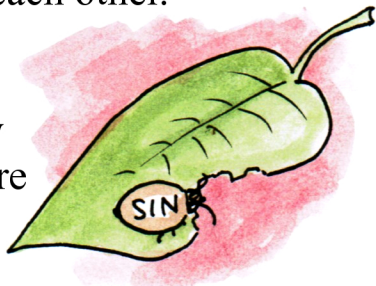


# the kingdom of heaven

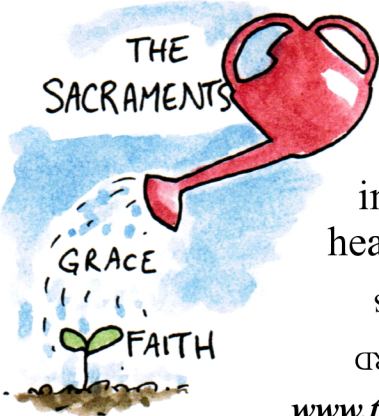


In today's Gospel reading Jesus tells us about the Kingdom of Heaven. Heaven isn't just where we will go when we die if we were good. Jesus was telling us that Heaven grows in our hearts when we choose to love God and each other.

Our Lord compares the Kingdom of Heaven to plants that grow up from little seeds. When we were baptized we received the gift of Faith. When we receive the other sacraments, especially Holy Communion, the Faith grows in us, like a plant that has water and sunshine. If we sin it's like little bugs or sickness that start to kill the plant. Confession will take those away so that our Faith can grow again.



How can you help the Kingdom of Heaven to grow in you? Going to Mass and receiving Holy Communion whenever you can, and going to Confession often are the best ways. Praying every day and learning about the Faith and about the saints will also help the Kingdom of Heaven to grow in your heart like a strong, healthy plant!

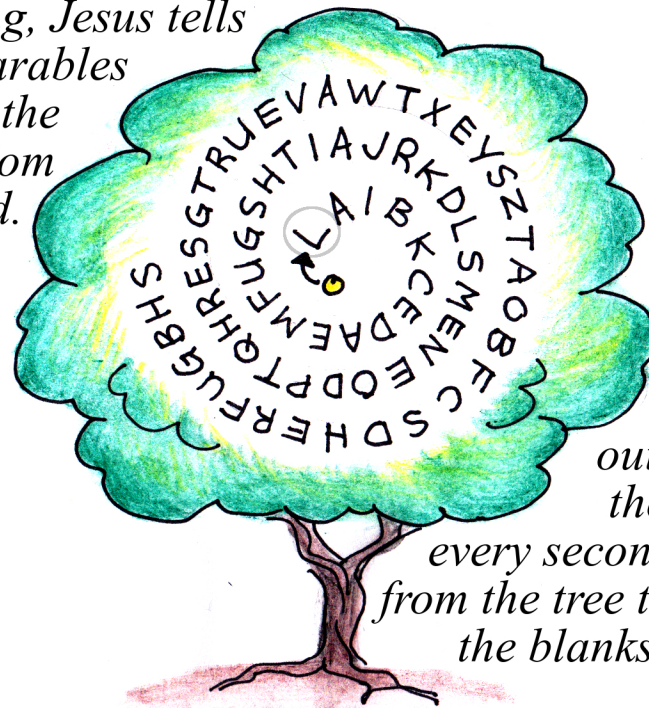


Answer to puzzle on front page: LIKE A MUSTARD SEED... THE GREATEST OF SHRUBS.  
Answer to Word-find: GROW IN OUR HEARTS

# The Kids' Bulletin

11th Sunday in Ordinary Time  
June 13th, 2021

In today's Gospel reading, Jesus tells two parables about the Kingdom of God.



To find out one of them, use every second letter from the tree to fill in the blanks below.

The Kingdom of Heaven is

\_\_\_\_\_

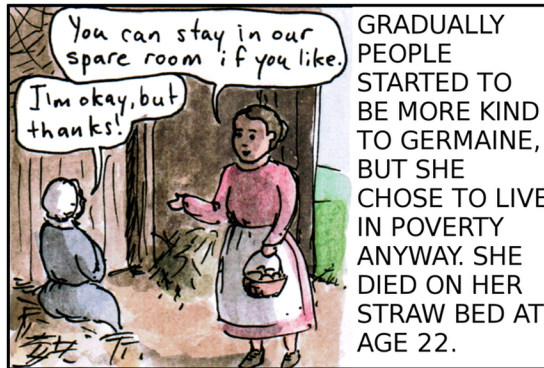
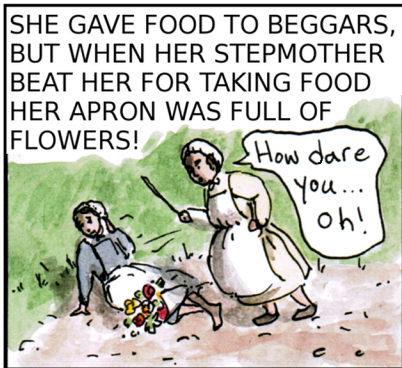
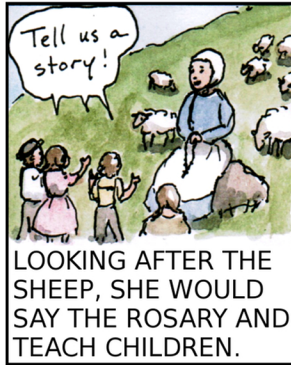
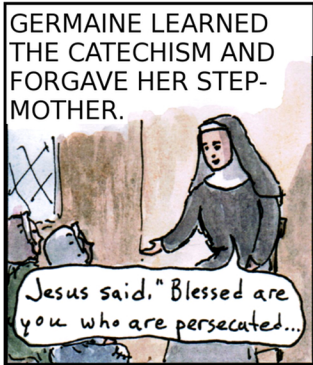
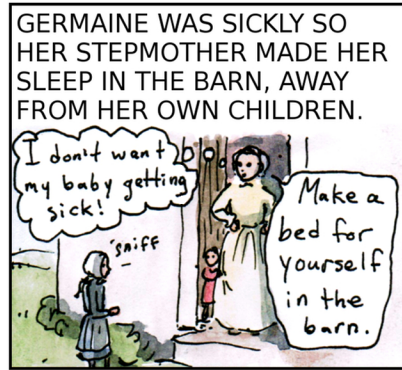
When it grows up it becomes

\_\_\_\_\_



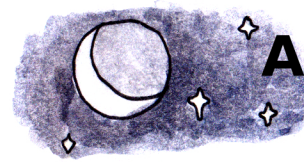
# Saint Germaine

## June 15

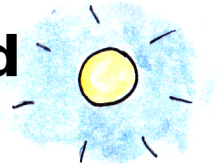


GERMAINE DID NOT SEEM IMPORTANT. SHE WAS NOT A RELIGIOUS OR A MISSIONARY OR A QUEEN. SHE BECAME HOLY BY BELIEVING IN GOD, LOVING HIM AND FORGIVING THOSE WHO WERE CRUEL TO HER. WE CAN THINK ABOUT HER WHEN PEOPLE ARE MEAN TO US. REMEMBER THAT SAINTS, LIKE JESUS, ARE FORGIVING.

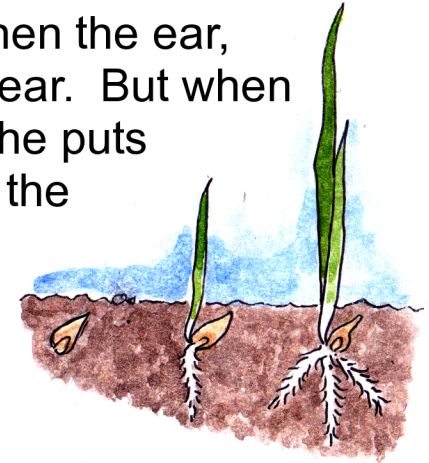
thekidsbulletin@gmail.com



## A Kingdom of God Word-Find



"The KINGDOM of GOD is as if a MAN should SCATTER seed upon the GROUND, and should SLEEP and RISE NIGHT and DAY, and the SEED should SPROUT and GROW, he KNOWS not how. The EARTH PRODUCES of itself, first the BLADE, then the ear, then the full GRAIN in the ear. But when the grain is RIPE, at once he puts in the SICKLE, BECAUSE the HARVEST has come."



S S E E D B L A D E  
 L C G O D G R I P E  
 E A R T H K N O W S  
 E T A R R I S E O I  
 P T I W I N N O H C  
 U E N N I G H T A K  
 G R O U N D R H R L  
 R E S P R O U T V E  
 O D A Y A M R T E M  
 W P R O D U C E S A  
 B E C A U S E S T N



Find the words in CAPITALS in this part of today's Gospel reading in the puzzle. Use the left-over letters to fill in the blanks at the end.

The Church helps our love for God to

